

Arriving at the campsite

Address:
Flower Camping Monplaisir, 8 Avenue des Bris, 17370 Saint-Trojan-les-Bains



By rail

La Rochelle SNCF railway station from Paris, Nantes, Bordeaux...

Traveling to the campsite by car from La Rochelle:

In summer:

- From the station, get to the 'Le Château d'Oléron' stop on [the 155 regional bus](#), 1h40 (April to September). Ticket: €2.50 (top up - or buy online on the Modalis app)
- At the 'Château d'Oléron' stop, take the [free summer shuttle bus](#), 'parcours violet' towards Saint-Trojan and get off at 'Flower Camping/Odalys Monplaisir' opposite the campsite (in July/August).

Out of season:

- Check out the bus routes 153 and 154, and the ['Transport on demand'](#) service!

By bicycle

Vélodyssée: A European cycling route that traverses Marennes, situated across from the Ile d'Oléron.

From Marenne, it takes 50 minutes to reach the campsite by bike. (16 kilometers)



Carpooling

Consider carpooling applications! Carpooling contributes to environmental protection, reduces traffic congestion, and allows for cost-sharing in a pleasant setting. You can either offer or look for a ride on [mobicoop.fr](#), a collaborative carpooling platform that charges no management fees.



mobicoop
La mobilité partagée

On location, no car required!

On foot...

- "Monplaisir" stop of the P'tit Train de Saint-Trojan (exit gate): 30 m
- Saint-Trojan town center, including its market and shops: 1.3 km
- Bris Marsh: 1.9 km
- First beach: 2.2 km
- Gatseau Beach: 3.2 km
- And numerous other treasures to uncover.

or by bicycle!

- Great Beach of Saint Trojan: 11 min
- Grand-Village: 14 min
- Dolus-d'Oléron: 24 min
- The Oléron Castle: 27 min
- The Cotinière: 45 min

Book your bicycles at the campsite reception!

Every bicycle journey is filled with discoveries. What if an expedition, even an extended one, was a ride rather than a limitation?

Through transportation

Summer Shuttles: easy and free!

During the peak season, [Summer Shuttles](#) provide complimentary transportation between villages and beaches throughout the island.

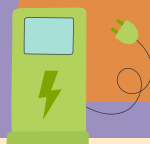
- The "Camping Flower/Odalys Monplaisir" stop on the [purple route](#) is located directly across from the campsite.
- It serves St-Trojan, Grand Village, Dolus, and Château d'Oléron (Regional Car 7 transfer).

[Verify the schedules in real time.](#)

In low season, ["Transport on demand"](#): a free shuttle that picks you up at the campsite and drops you off at one of the 23 stops on the island. You can return from another stop.

In low season, simply book your 'Transport on Demand' journey by calling 05 33 09 47 60 no later than 5pm the day before your journey.

Easily recharge your electric vehicle.



Charging station 1, Allée Monplaisir (400 meters from the campsite)